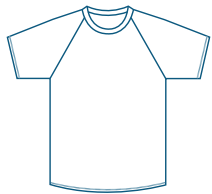
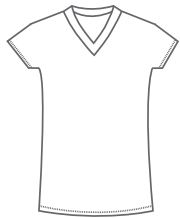


# 2023 Finisher Shirt Sizing Chart

This year, the v-neck shirts have a different cut – fitting the same as the crew necks. Shirts may be exchanged for a different size onsite if the shirt has not been worn, soiled or altered. Reference this chart to find your perfect fit. Select your shirt size upon registering or on event day at the Finisher Shirt distribution tent.



Crew Neck	XXS	XS	S	M	L	XL	2XL	3XL
<b>Body Length</b> ( <i>length from hips</i> )	25	26	27	28	29	30	31	32
<b>Chest</b> ( <i>1" below armhole seam to seam</i> )	34	37	40	43	46	49	52	55
<b>Shoulders</b> ( <i>seam to seam</i> )	15	15 ¾	16 ⅝	17 ½	18 ⅜	19 ¼	20 ¼	21



V-Neck	XXS	XS	S	M	L	XL	2XL	3XL
<b>Body Length</b> ( <i>length from hips</i> )	25	26	27	28	29	30	31	32
<b>Chest</b> ( <i>1" below armhole seam to seam</i> )	34	37	40	43	46	49	52	55
<b>Shoulders</b> ( <i>seam to seam</i> )	15	15 ¾	16 ⅝	17 ½	18 ⅜	19 ¼	20 ¼	21

Note: All dimensions are in inches from the shirt laying flat.

\*Not all sizes are available in each location, please check the registration form for available sizes.